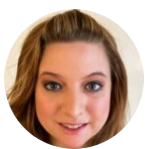




Yale Assure Lock 2 Review | Features, Alternatives & More



Rebecca Cline

Updated May 19, 2025

6 min read | [share](#)

Used by more than 1 million, including the most trusted names in real estate



Key takeaways

- In this Yale Assure Lock 2 review, discover what the Yale Assure Lock 2 is and how it works.
- Yale's smart lock is compatible with most door types, making it easy to retrofit and install anywhere.
- The Yale Assure Lock 2 allows you to use the smartphone app to grant visitors access to your home while you're away.
- Features of the Yale Assure Lock 2 include built-in WiFi and remote access capabilities.
- Overall, the Yale Assure Lock 2 is an everyday security solution that makes accessing one's home less stressful.
- Alternatives to the Yale Assure Lock 2 include Eufy smart lock and August smart locks.

PRODUCT REVIEW

Yale Assure Lock 2

It's no secret that property technology is rapidly changing the face of real estate — especially commercial and residential real estate. One such type of proptech is the [smart lock](#). Smart locks not only secure your front door, but they also make it easier to ditch keys, cards, and fobs altogether.

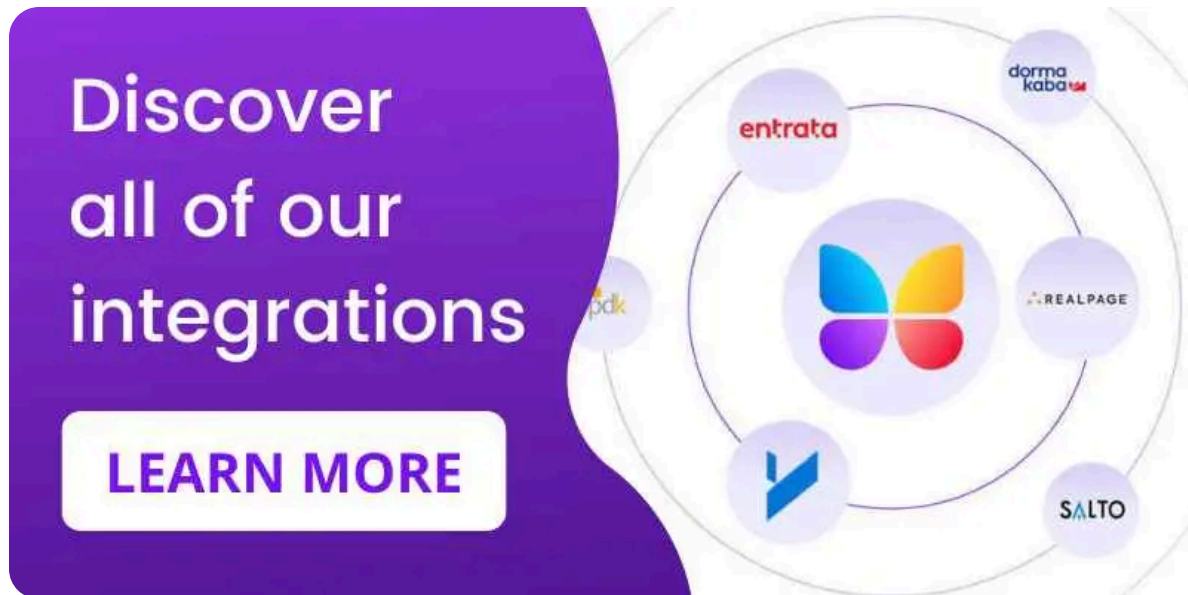
But with so many smart lock makes and models to pick from, where do you start your search? While there are hundreds of robust smart locks on the market, we're outlining the Yale Assure Lock 2 smart lock.

In this Yale Assure Lock 2 review, discover what it is and how it works. Then, we detail the pros and cons of the Yale Assure Lock 2, whether you should get it, and possible alternatives

This post covers:

- [What is Yale Assure Lock 2?](#)
- [How does the Yale Assure Lock 2 work?](#)
- [Yale Assure Lock 2 review](#)
- [Pros and cons of Yale Assure Lock 2](#)

- Should you get the Yale Assure Lock 2?
- What are the alternatives to Yale Assure?



What is Yale Assure Lock 2?

Most people don't realize that Yale is one of the earliest lock manufacturers, dating back to 1840. Through the years, Yale locks have evolved with the times, eventually bringing us the smart Assure Lock 2 model.

The Assure Lock 2 exhibits a sleek design and connects via WiFi and Bluetooth, making it controllable from your smartphone. Furthermore, Yale's smart lock is compatible with most door types, making it easy to retrofit and install anywhere.

What is the difference between Assure Lock and Assure Lock 2?

The Yale Assure Lock 2 has Bluetooth and Apple Home built in. The first-generation Yale Assure Locks required you to purchase a Yale Smart Module separately to connect your smartphone or smart home system.

How does Yale Assure Lock 2 work?

This Yale lock works by connecting to WiFi, allowing you to integrate the smart lock into Alexa, Google Home, and more. Moreover, [Z-Wave](#) modules help you connect to Ring Alarm, Samsung SmartThings, and more.

Additionally, Yale Assure Lock 2 allows you to use the smartphone app to grant visitors remote access to your home while you're away.

Lastly, it has a touchpad that allows users to enter with a PIN code. Further, users who prefer the security of a traditional key can use the alternate keyhole to enter.

Does Yale Assure Lock 2 work without WiFi?

Yes. If WiFi is down in your home, you can still connect to your Yale Assure Lock 2 via Bluetooth.

Yale Assure Lock 2 review

Features

The Yale Assure Lock 2's smart lock solution includes a variety of key features:

- Built-in WiFi connection.
- Ability to share entry schedules with visitors.
- App-enabled remote access capabilities.
- Unique auto-unlock function.
- Fingerprint access for keyless entry.
- Quick and easy installation and retrofit.
- 24/7 notification and activity feed.
- Encrypted security.
- Alternate keyhole for tenants who prefer a traditional key.

Cost

The cost for a basic model of Yale Assure Lock 2 with WiFi connectivity starts at \$259.99. However, there are several bundle options available that include different finishes and door handle styles that may increase the price.

Pros and cons

Pros

- **Available in different finishes.** With the Yale Assure Lock 2, you get to choose which finish you want. For instance, there are five primary finish choices, including antique brass, oil-rubbed bronze, brass, satin nickel, and black suede.

- **Platform support.** Yale Assure Lock 2 supports Apple products, Google Home, Alexa, and more. Ultimately, this makes it versatile and user-friendly.
- **Compatible with most doors.** Lastly, users won't have to worry about the Yale Assure Lock 2 not fitting their door type.

Cons

- **Extra costs.** If users want to use WiFi or [Zigbee](#), they have to pay slightly extra. As such, this might not be a cost-effective solution for some.
- **High price.** If buyers want more than just a basic model with additional features and parts, the final price ends up being more expensive.

Should you get the Yale Assure Lock 2?

Overall, the Yale Assure Lock 2 is a high-quality everyday security solution that makes accessing one's home or workplace less stressful. What's more, with the fingerprint and mobile entry options, users don't have to worry about forgetting their physical keys.

Additionally, the 24/7 update feed available on the smartphone app creates a sense of peace whenever you're away from your property. Altogether, it seems that the features accompanied by the peace of mind make this Yale smart lock worth the investment.

What's more, the Yale Assure Lock 2 integrates seamlessly with the ButterflyMX suite of access control products. So, staff and tenants can control

access to front doors and gates, as well as unit doors, from a single smartphone app.

Discover how ButterflyMX integrates with smart locks:

04:06

What are the alternatives to Yale Assure?

While there are many smart locks on the market, they all offer something unique compared to each other.

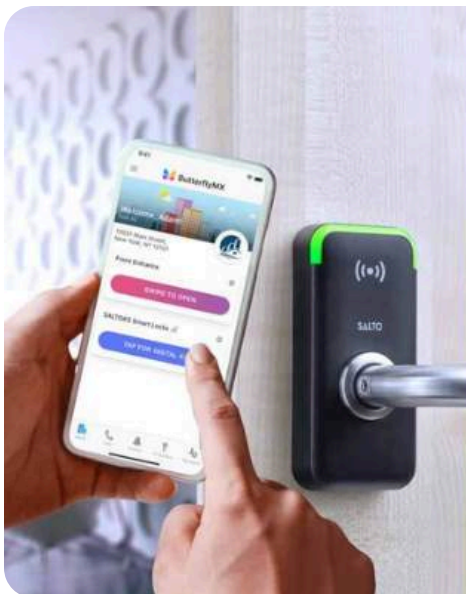
So, here are some alternatives to the Yale Assure Lock 2:


- [Eufy smart lock](#). The Eufy smart lock provides biometric and keypad entry. Moreover, it's durable, sleek, and can be unlocked with a charger if the battery dies.
- [August smart lock](#). The August smart lock is great for property managers because of its simple installation. What's more, this smart

lock utilizes a WiFi connection that allows users to lock and unlock their doors remotely.

For a truly seamless access experience, try a ButterflyMX unified access control solution. ButterflyMX offers several access control solutions such as keypads and readers, and integrates with more than 80 smart lock models.

Furthermore, ButterflyMX is powered by cloud-based software, which means you can remotely unlock doors, adjust tenants' access permissions, and grant access to visitors with the highly-rated smartphone app.

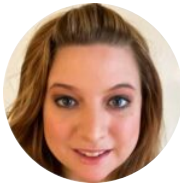


 ButterflyMX

Integrate your smart locks with ButterflyMX

[LEARN HOW](#)

Disclaimer: ButterflyMX provides these blog posts to help our customers and potential customers make the right business decisions for them. Our blog posts are based on the information we have available to us at the time of writing.



Author
Rebecca Cline

View all posts by [Rebecca Cline](#)
Follow Rebecca on [LinkedIn](#)

Senior Content Writer

Rebecca Cline is a Content Writer with a knack for all things real estate, access control, and property technology, who joined the team at ButterflyMX in 2022. With a love for all things content, she enjoys exploring new trends and innovations, ensuring there's always something fresh and exciting to write about.

Rebecca holds a Bachelor's Degree in Strategic Communications from West Texas A&M University. After beginning her career as a freelance writer, she transitioned into full-time roles as an affiliate and sales copywriter and eventually found her home at ButterflyMX as a content writer.

Based in Virginia, Rebecca enjoys walking her Chihuahua, hiking, and diving into the rich history of local museums and landmarks.

44 West 28th Street
4th Floor
New York, NY 10001

Your Privacy Choices 

About

Status

Careers

[Partners](#)

[Warranty](#)

[Contact us](#)

[Help Center](#)

[Trust Center](#)

[Privacy Policy](#)

[Terms of Service](#)

Property Management Software

© 2026 ButterflyMX, Inc.

